

BizFlow WebMaker

A new revolutionary forms creation tool fully integrated with BizFlow

Implementing rich user interfaces and forms between the end user and your automated business process is the tipping point for success in any given BPM project. To address forms creation, one of the most time consuming aspects of a BPM implementation, BizFlow WebMaker delivers rich, interactive, and 100% thin Web 2.0 forms without the need for scripting or .Net/J2EE programming. Not only are our clients realizing 40% to 60% reduction in the time needed to build sophisticated forms, they're achieving additional productivity and quality improvements by using WebMaker's built-in test simulation facility.

Design and Publish Intuitive 100% Web Based Forms



"We never implemented a work flow application without programming. Using BizFlow's WebMaker and Web Services Component Activity we were able to easily integrate with our clients ERP system. This is a first for us."

Kevin Sims, TrintyWave
– A HandySoft Partner

Simulation Testing Speeds Delivery

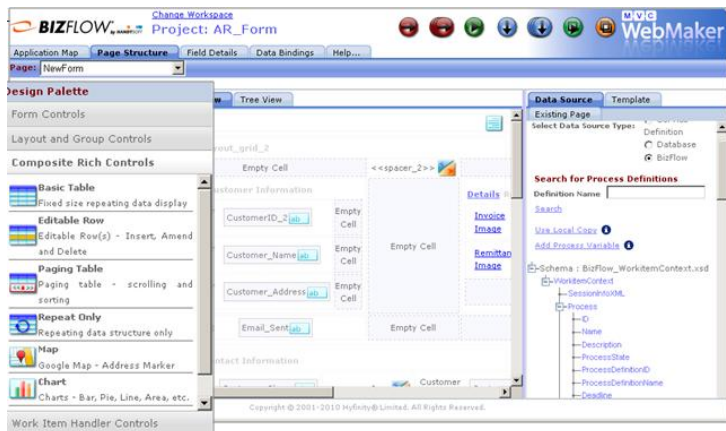
Benefits:

- Rapidly design, test and publish highly interactive forms
- Design intuitive and user friendly, modern Web 2.0 forms
- Quickly share data with BizFlow processes to use form data for routing and other business rules
- Easily update one or more databases from fields captured in your form-without programming or scripting
- Completely extensible and flexible with standards based technology (SOA, XML, XSL, CSS)

Workitem Context				
Process	Activity	Workitem	User	Application
ID		110		
Name		Process Name		
Description				
State		R		
Process Definition ID		126		
Process Definition Name		Process Definition Name		
Deadline		0		
Initiator		0000000101		
Initiator Name		Initiator Name		
Creation Date Time		2009/08/18 15:21:23		
Complete Date Time				
Process Variables				
Custom Attributes				
Name	Value Type	Value	Display Value	
NumericPV	N	1234		
StringPV	S	string value		

With support for AJAX and mashups, WebMaker enables the reuse of SQL databases, web services and SOA components to enable process designers to rapidly create XML-centric web applications and forms that present, capture, process, and report information from and to BizFlow and deliver that information to business users in real-time.

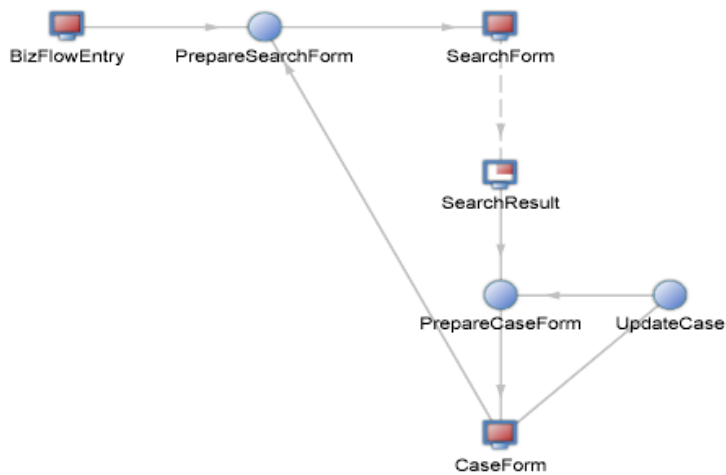
Drag and Drop BizFlow WebMaker Design Studio



BizFlow WebMaker supports rapid forms design with:

- Point and click/drag and drop design
- Automatic generation of form fields from databases, webservice or BizFlow process variables
- Drag and drop binding of fields to multiple data sources (database, variable, web service)
- Use of CSS (cascade style sheets) to reapply look and feel across multiple forms
- Rich collection of point and click controls including Tabs, Accordion, Resizable Panels, Tables, Calendar pop-ups and more
- Form field validation
- Point and click definition of events and corresponding actions
- Built-In BizFlow Workitem handling events (BizFlow Web services)
- AJAX support without requiring scripting (partial page updates)
- Visually manage pages and interactions using MVC approach
- Publish forms to Internet or Intranet Sites as well as BizFlow process
- Add process context information to perform testing prior to deploying to a BizFlow process

Visually Define Form (web page) and Interactions (controllers)



<http://www.handysoft.com>